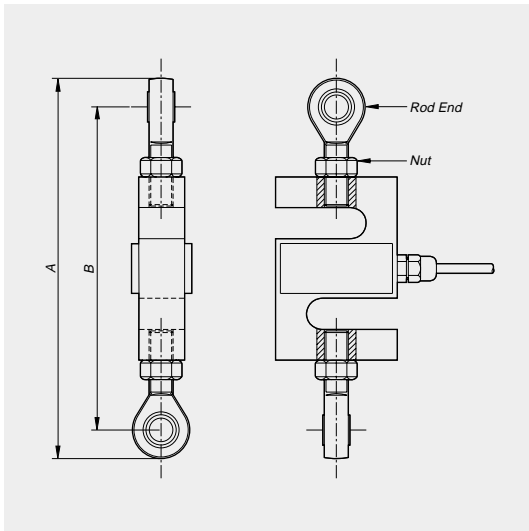


Tension Application

SBA/SB/SBS

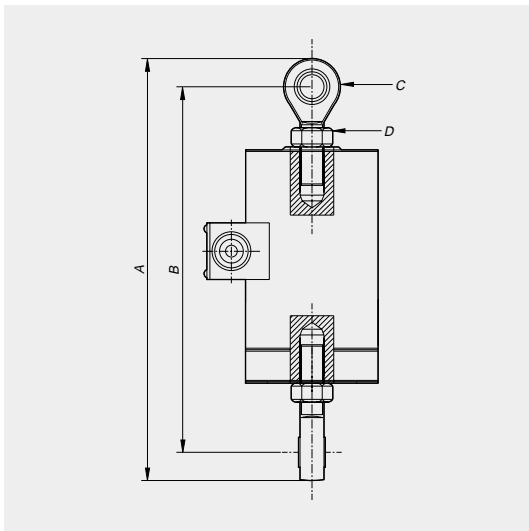


DIMENSIONS

unit:mm

Model	Capacity	Rod end	Nut	Max. A	Max. B
SBA	50kgf, 100kgf	RE-6	M6×1.0	133.5	115.5
	200kgf, 500kgf, 1tf	RE-12A	M12×1.75	198.8	162.8
	2, 3, 5tf	RE-18	M18×1.5	278	230
SB	20, 50, 100, 200, 500kgf	RE-12A	M12×1.75	198	162
	1, 2tf	RE-18	M18×1.5	268	220
SBS	500kgf	RE-12A	M12×1.75	199.7	163.7
	1tf, 2tf	RE-18	M18×1.5	259.7	211.7
	5tf	RE-24	M24×2.0	360	280

CT/CTS

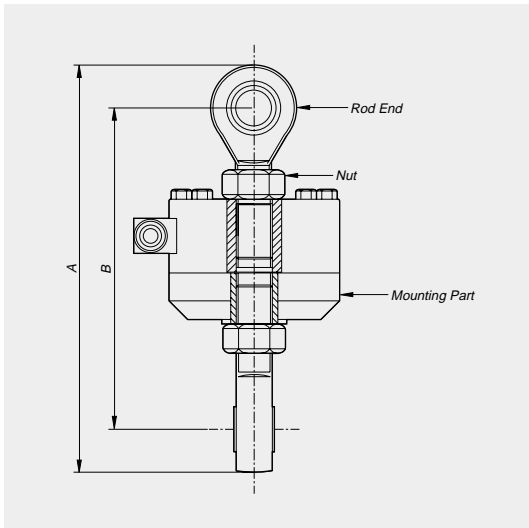


DIMENSIONS

unit:mm

Model	Capacity	Rod end	Nut	A	B
CT	50kgf, 100kgf, 200kgf 500kgf, 1tf	RE-12B	M12×1.25	253	217
	2, 3, 5tf	RE-24	M24×2.0	392	312
CTS	200kgf, 500kgf, 1tf	RE-12B	M12×1.25	253	217
	2, 3, 5tf	RE-24	M24×2.0	392	312

LS

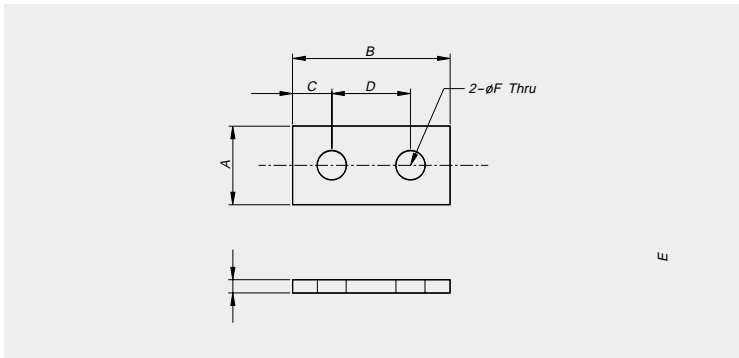


DIMENSIONS

unit:mm

Model	Capacity	Mounting part	Rod end	Nut	Max. A	Max. B
LS	2, 3tf	LSTM-2	RE-16	M16×2.0	234	190
	5tf	LSTM-5	RE-18	M18×1.5	250	202
	10tf	LSTM-10	RE-24	M24×2.0	349	269
	20tf	LSTM-20	RE-39	M39×2.0	473	371

Spacer



FEATURES

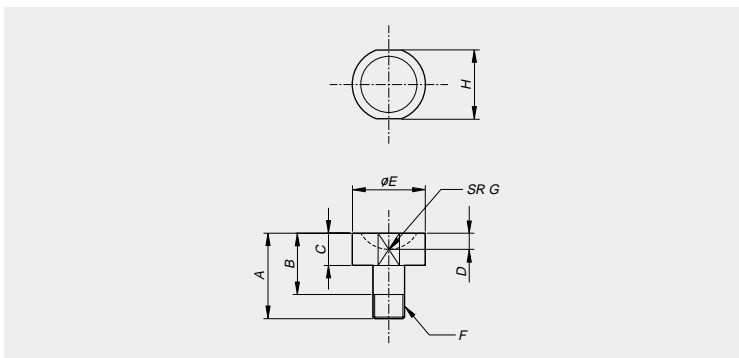
- Use with most popular single-ended beams
- Provides flat mounting surface required for optimum load cell performance
- Zn plated mild steel or stainless steel

DIMENSIONS

unit: mm

Model	A	B	C	D	E	F
SP-1	31.8	52.0	13.3	25.4	6.4	13.5
SP-2	38.0	76.2	19.05	38.1	6.4	20.0

Ball cup(with tap)



FEATURES

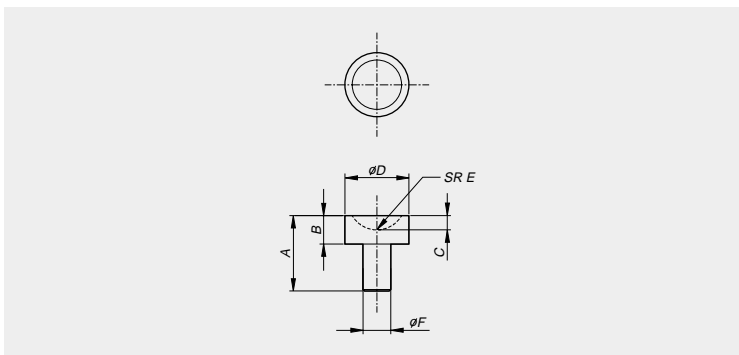
- Provides point loading for maximum accuracy
- For use with most popular single-ended beams
- Fixed on load cell with tap
- Zn plated hardened alloy steel or stainless steel

DIMENSIONS

unit: mm

Model	A	B	C	D	E	F	G	H
BCUPT-1	56.0	41.0	26.0	7.0	25.4	M11 × 1.75	15	24.0
BCUPT-2	53.0	38.0	20.0	10.0	45.0	M18 × 1.5	20	43.0

Ball cup(without tap)



FEATURES

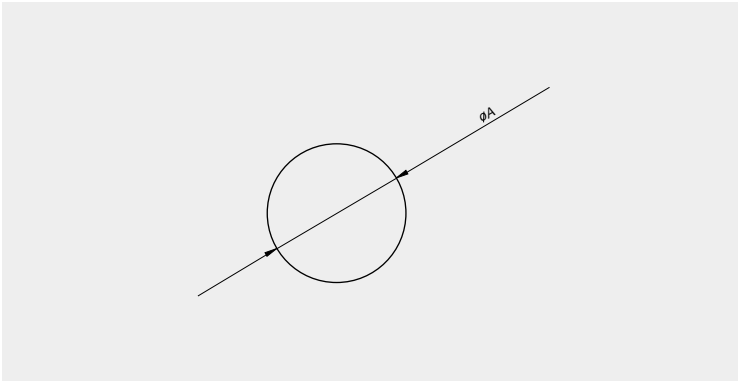
- Provides point loading for maximum accuracy
- For use with most popular single-ended beams
- Zn plated hardened alloy steel or stainless steel

DIMENSIONS

unit: mm

Model	A	B	C	D	E	F
BCUP-1	56.0	26.0	7.0	25.4	15	12
BCUP-2	53.0	20.0	10.0	45.0	20	18

Ball



FEATURES

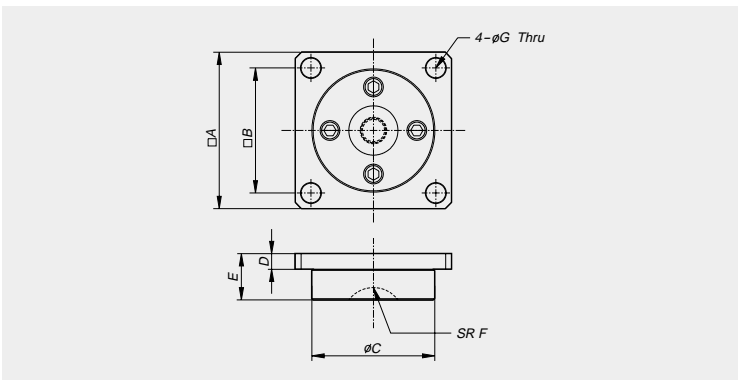
- Use with ball cup and load receiver to build a custom scale
- Reliable hardened
- Reliable chrome plating

DIMENSIONS

unit:mm

Model	A
B-1	17.4
B-2	30.0

Load receiver



FEATURES

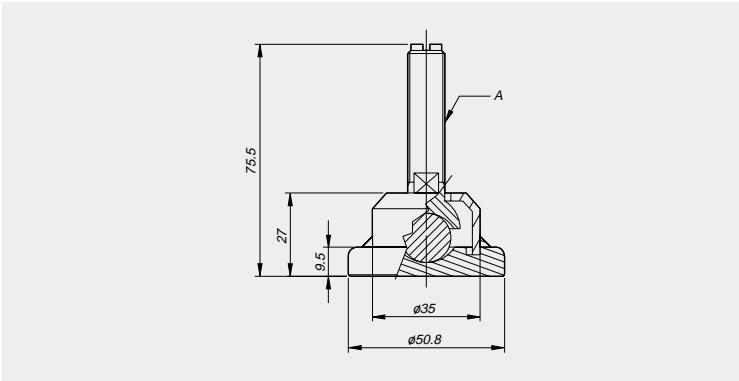
- Use with ball cup and ball to build a custom scale
- Provides point loading for maximum accuracy

DIMENSIONS

unit:mm

Model	A	B	C	D	E	F	G
LRCV-1	127	101.6	54	12.7	24.7	15	16
LRCV-2	127	101.6	100	12.7	37.7	25	16

Swivel foot



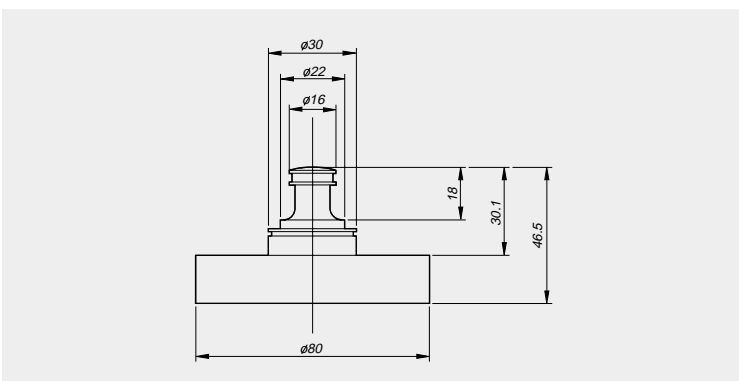
FEATURES

- Replacement foot, adapts to most floor scales
- Use with the single-ended beams to provide large, flat, adjustable introduction surface

DIMENSIONS

Model	Application model	Capacity	A
SF-M	BSS, BSA-500L, 1t, 2t	500kgf, 1tf, 2tf	M12 ×1.75
SF-I	BSS, BSA-1klb, 2klb, 2.5klb, 3klb, 5klb	1klb, 2klb, 2.5klb, 3klb, 5klb	1/2 - 20 UNF

Pivot foot

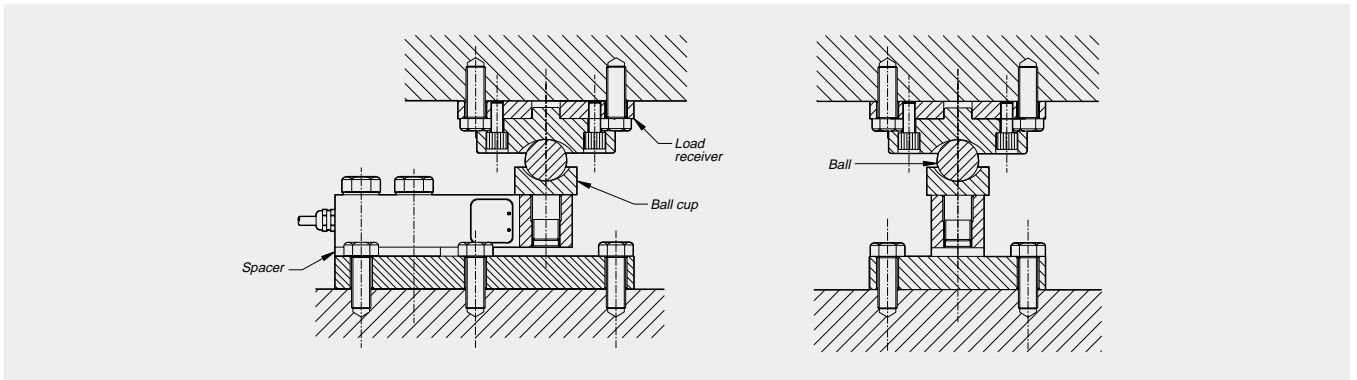


FEATURES

- Replacement foot, adapts to most floor scales
- Use with the single-ended beams to provide large, flat, adjustable introduction surface
- Application model: BSA-xx-TEND

Beam Application

Typical application of custom scale

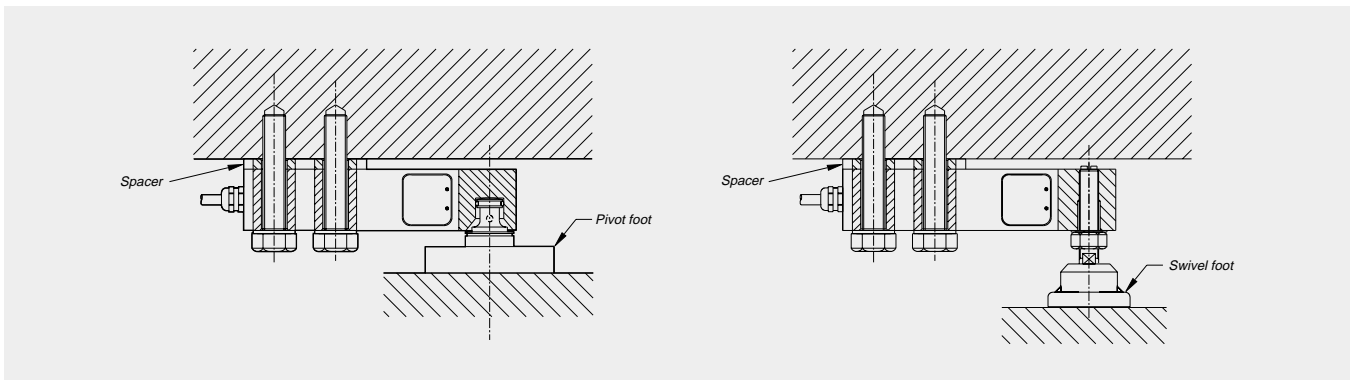


DIMENSIONS

unit: mm

Model	Capacity	Spacer	Ball cup	Ball	Load receiver
BSS, BSA	500kgf, 1tf, 2tf	SP-1	BCUPT-1	B-1	LRCV-1
BSS, BSA	3tf, 5tf	SP-2	BCUPT-2	B-2	LRCV-2

Typical application of pivot and swivel foot



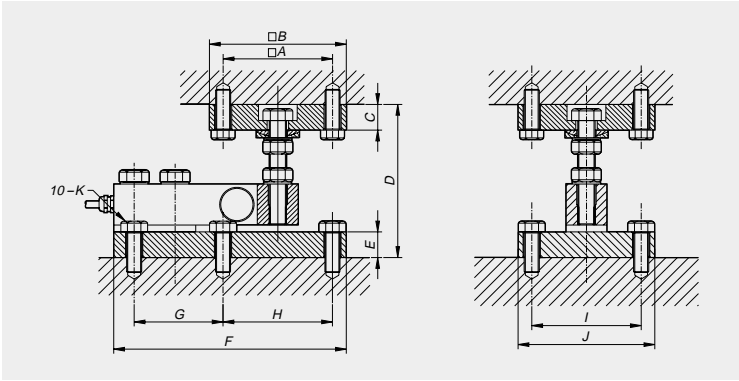
DIMENSIONS

unit: mm

Model	Capacity	Spacer	Pivot foot	Model	Capacity	Spacer	Swivel foot
BSA-xx-TEND	500kgf, 1tf, 2tf	SP-1	-	BSS, BSA	500kgf, 1tf, 2tf	SP-1	SF-M
				BSS, BSA	1, 2, 3, 5klb	SP-1	SF-I

Tank Weighing Application

BSS/BSA-TW



FEATURES

- Capacities: 500 kgf - 5 tf
- Natural Zn plating
- Environmentally protected load cell

OPTIONS

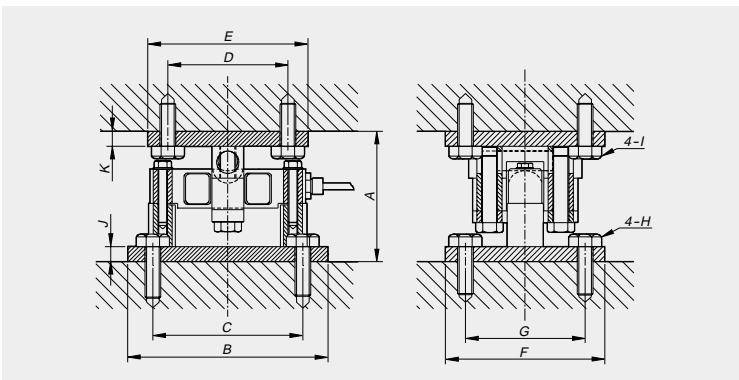
- Stainless steel

DIMENSIONS

unit: mm

Load cell	Model	A	B	C	D	E	F	G	H	I	J	K
BSS, BSA-500L,1,2	BSS/BSA-500L1,2-TW	101.6	127	17.8	101.6 - 114.3	17.8	180.9	52.3	101.6	101.6	127	M16
BSS, BSA-3,5 BSS/	BSA-3,5-TW	101.6	127	23.9	127 - 140	23.9	215.9	82.5	101.6	101.6	127	M16

DSB1-TW



FEATURES

- Capacities: 10 klb - 75 klb
- Self-checking easy-to-use design allows module to be bolted directly to tank leg without requiring additional mounting plates or load buttons
- Environmentally protected load cell
- Double-ended shear beam design, center loaded

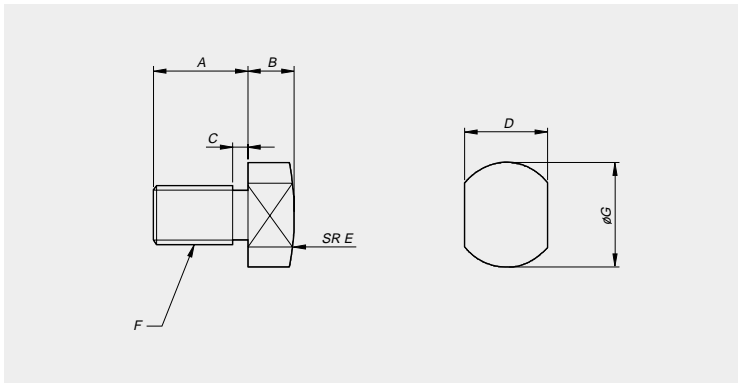
DIMENSIONS

unit: mm

Model	Capacity	A	B	C	D	E	F	G	H	I	J	K
DSB1-10klb	10 klb	165	254	190	152	203	203	152.4	M20	M20	19	19
DSB1-20klb	20 klb											
DSB1-25klb	25 klb											
DSB1-40klb	40 klb	198	356	292	152	203	254	190	M28	M20	25.4	19
DSB1-50klb	50 klb	241.3	356	292	165	230	254	190	M28	M28	25.4	25.4
DSB1-60klb	60 klb											
DSB1-75klb	75 klb											

Compression Application

Load button



FEATURES

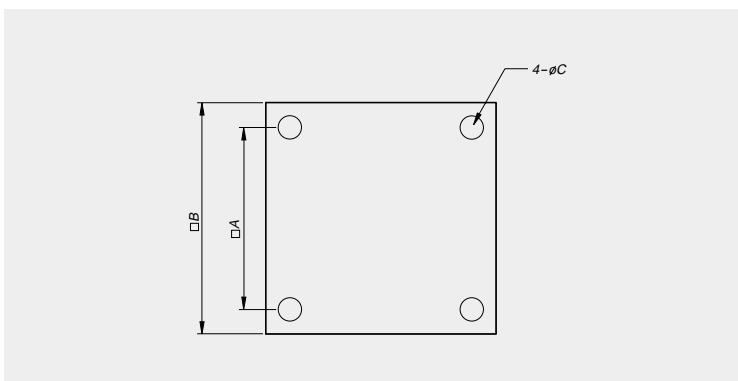
- Suitable for use with compression load cell LS, CC
- Hardened chrome plated steel

DIMENSIONS

unit: mm

Model	A	B	C	D	E	F	G
LBLS-1	44	13	5	24	50	M16 × 2.0	30
LBLS-2	44	15	5	27	100	M18 × 1.5	34
LBLS-3	48	20	6	36	100	M24 × 2.0	42
LBLS-4	65	35	6	60	200	M39 × 2.0	70
LBCC-1	20	12	5	22	50	M12 × 1.25	24
LBCC-2	20	20	6	36	100	M24 × 2.0	42
LBCC-3	30	35	6	60	200	M39 × 2.0	70
LBCC-4	30	35	6	60	200	M50 × 2.0	70

Loading plate



FEATURES

- Suitable for use with leveling pads
- Popular use for compression application
- Hardened Zn plated steel

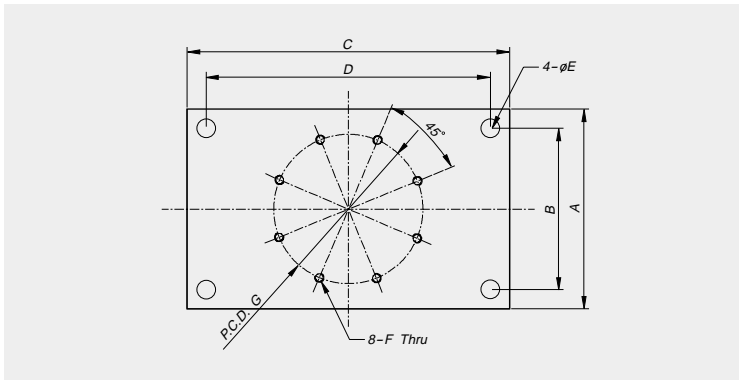
DIMENSIONS

unit: mm

Model	A	B	C	Thickness
LPLS-1	105	130	12	23
LPLS-2	105	130	12	23
LPLS-3	125	160	14	30
LPLS-4	150	200	14	30
LPHC-1	150	200	14	30
LPHC-2	160	220	19	40
LPHC-3	200	260	23	60
LPHC-4	200	280	27	80
LPCC-1	77	100	8	15
LPCC-2	105	130	12	23
LPCC-3	125	160	14	30
LPCC-4	150	200	14	30

Compression Application

Mounting plate(LS)



FEATURES

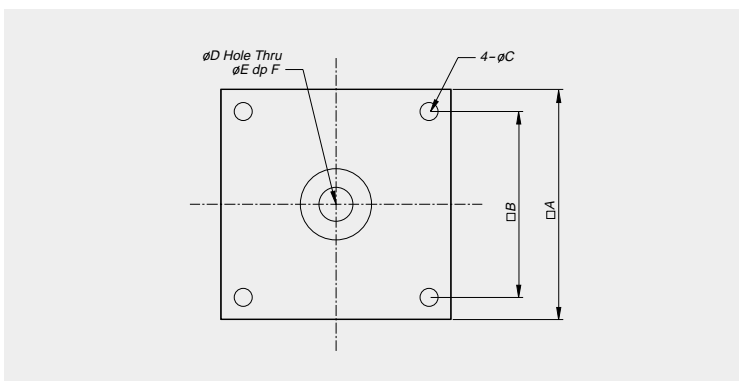
- Mounting plate for LS
- Suitable for use with leveling pads
- Easy installation for compression application

DIMENSIONS

unit: mm

Model	A	B	C	D	E	F	G	H	Thickness
MPLS-1	130	105	210	185	12	M6 × 1.0	97.2	20.30	23
MPLS-2	130	105	210	185	12	M8 × 1.25	103.2	22.0	23
MPLS-3	160	125	160	125	14	M10 × 1.5	117.6	21.0	30
MPLS-4	200	160	200	160	14	M12 × 1.75	157.6	17.4	30

Mounting plate(CC)



FEATURES

- Mounting plate for CC
- Suitable for use with leveling pads
- Easy installation for compression application

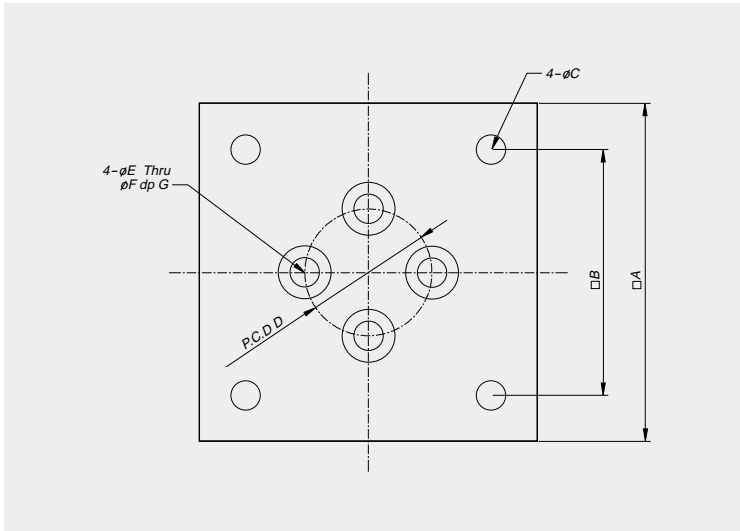
DIMENSIONS

unit: mm

Model	A	B	C	D	E	F	Thickness
MPCC-1	100	77	8	22	13	11	15
MPCC-2	130	105	12	42	25	18	23
MPCC-3	160	125	14	65	40	22	30
MPCC-4	200	150	14	75	75	22	30

Compression Application

Mounting plate(HC)



FEATURES

- Mounting plate for HC
- Suitable for use with leveling pads
- Easy installation for compression application

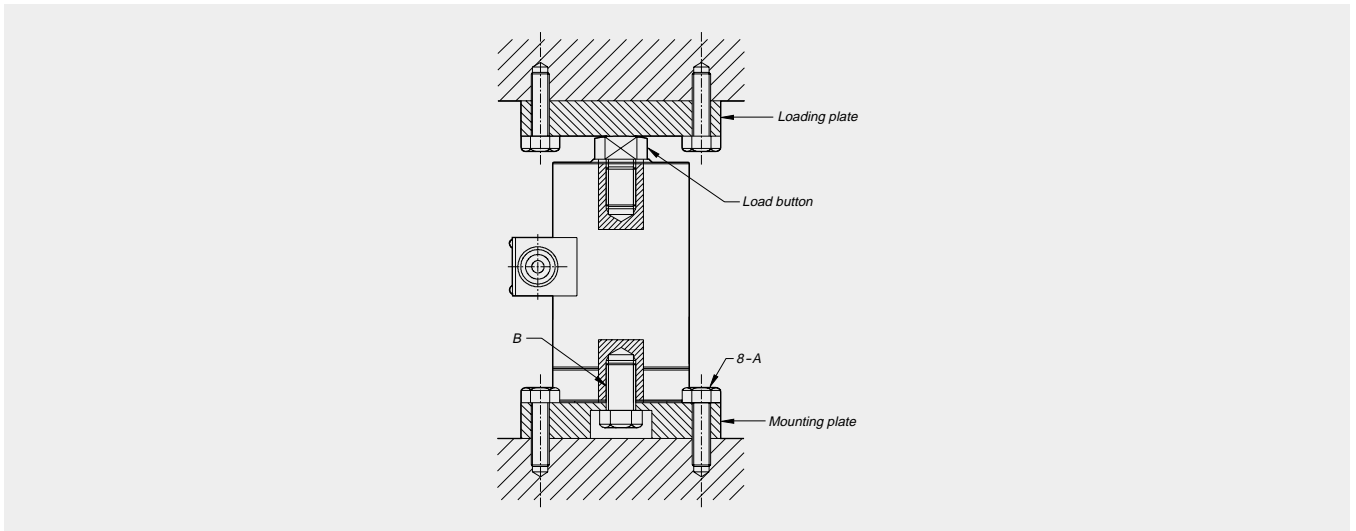
DIMENSIONS

unit:mm

Model	A	B	C	D	E	F	G	Thickness
MPHC-1	200	150	14	80	14	25	15	30
MPHC-2	220	160	19	80	14	25	15	40
MPHC-3	260	200	23	100	18	35	17.5	60
MPHC-4	280	200	27	130	18	35	17.5	80

Compression Application

CC-ACC

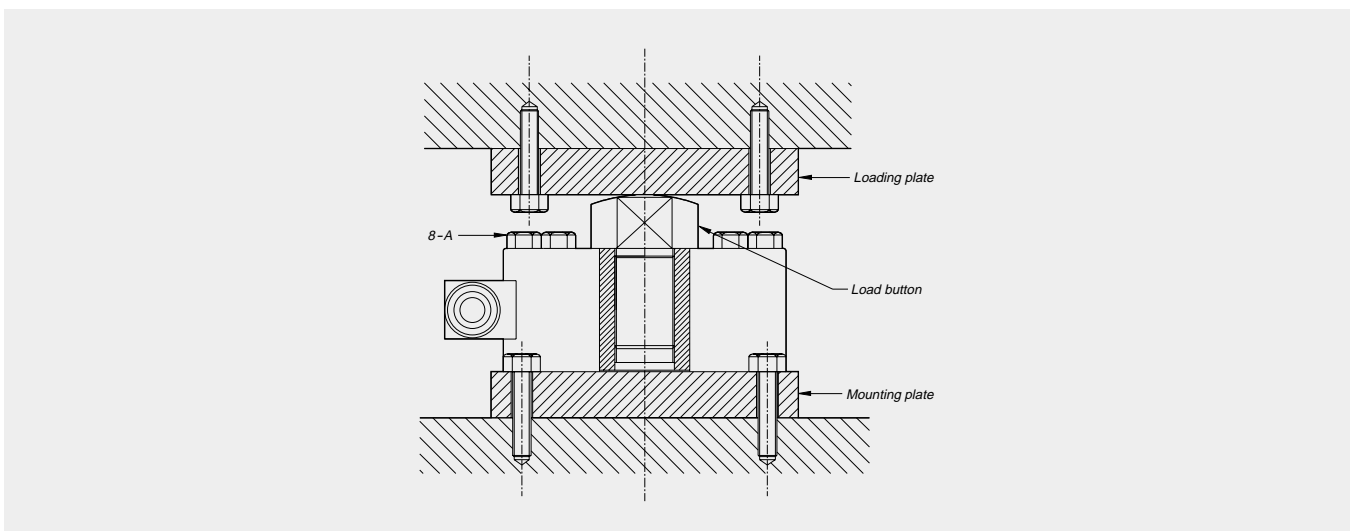


DIMENSIONS

unit: mm

Load cell	Capacity	Mounting plate	Loading plate	Load button	A	B
CC-50L, 100L, 200L, 500L, 1	50kgf, 100kgf, 200kgf, 500kgf, 1tf	MPCC-1	LPCC-1	LBCC-1	M8	MPT-1
CC-2, 3, 5	2tf, 3tf, 5tf	MPCC-2	LPCC-2	LBCC-2	M12	MPT-2
CC-10	10tf	MPCC-3	LPCC-3	LBCC-3	M14	MPT-3
CC-20	20tf	MPCC-4	LPCC-4	LBCC-4	M14	MPT-4

LS-ACC



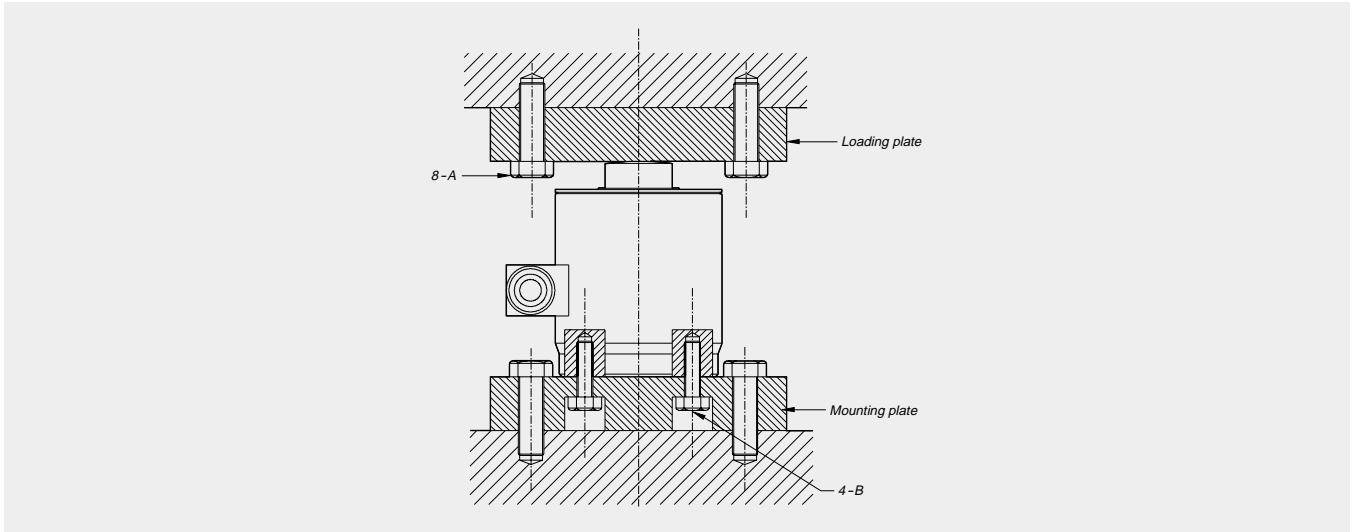
DIMENSIONS

unit: mm

Load cell	Capacity	Mounting plate	Loading plate	Load button	A
LS-2, 3	2tf, 3tf	MPLS-1	LPLS-1	LBLS-1	M6 × 1.0 L=65
LS-5	5tf	MPLS-2	LPLS-2	LBLS-2	M8 × 1.25 L=65
LS-10	10tf	MPLS-3	LPLS-3	LBLS-3	M10 × 1.5 L=85
LS-20	20tf	MPLS-4	LPLS-4	LBLS-4	M12 × 1.75 L=105

Compression Application

HC-ACC



DIMENSIONS

unit:mm

Load cell	Capacity	Mounting plate	Loading plate	A	B
HC-20, 30	20tf, 30tf	MPHC-1	LPHC-1	M12	M12×1.75
HC-50	50tf	MPHC-2	LPHC-2	M18	M12×1.75
HC-100	100tf	MPHC-3	LPHC-3	M22	M16×2.0
HC-200	200tf	MPHC-4	LPHC-4	M24	M16×2.0