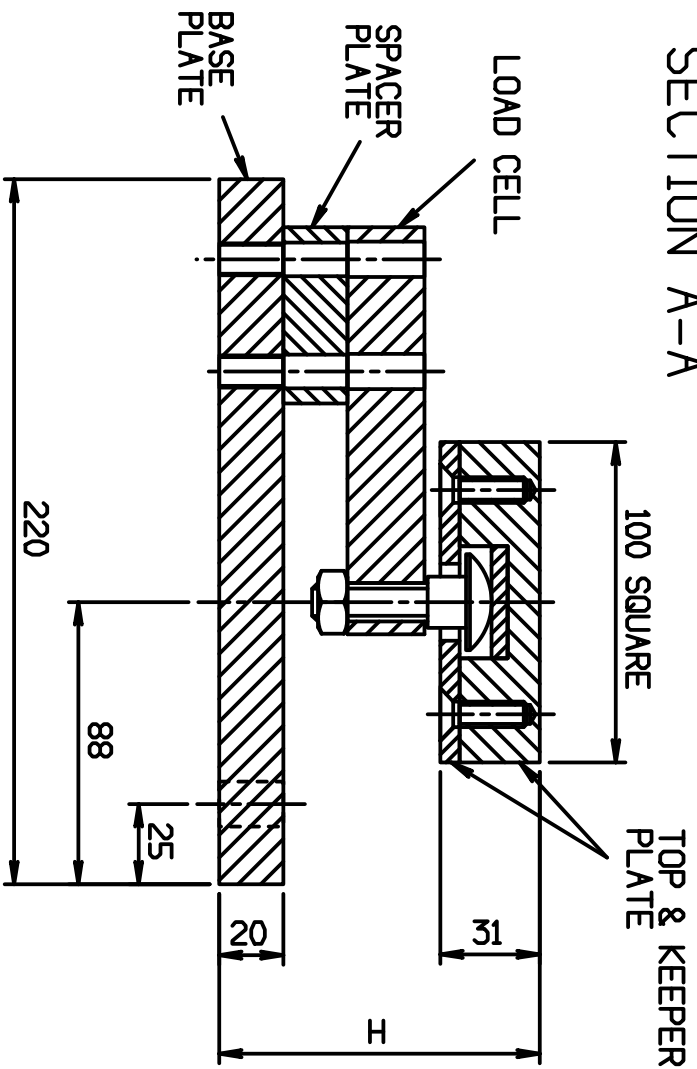


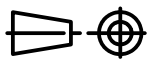
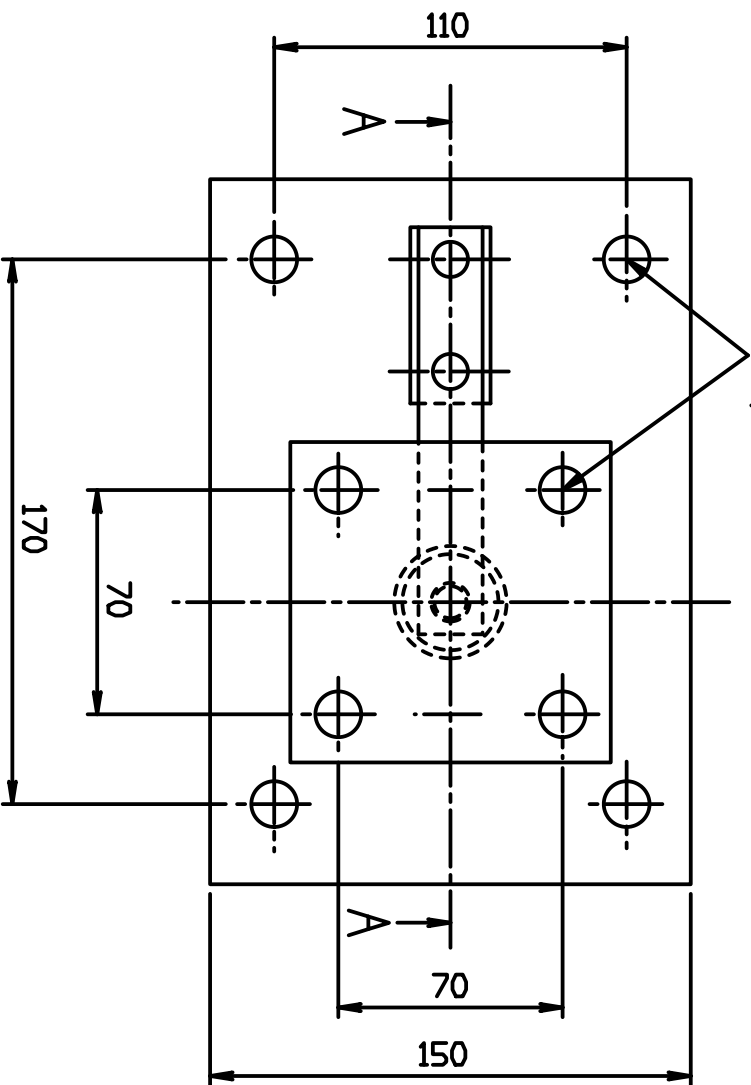
# SECTION A-A



H = 96 FOR LS 50kg - 100kg  
H = 94 FOR LS 250kg  
H = 100 FOR LS 500kg - 1000kg

8 MOUNTING  
HOLES Ø 14

PART M-LS-1



Precision  
Transducers  
Ltd.

COMPLETE MOUNT M-LS-1

UNITS: mm	ISSUED: BY:	DRAWN: 01-05-1989	©
SCALE: not to scale	CHANGE: PART NUMBER CHANGED WAS A-PLS-1 BUT ADDED	REVISION: 03 DATE: 18-04-2001	
CHKD:	APPROVED:	DWG No. \ACC\APLNM-M-LS-1	