



Precision Transducers Ltd.



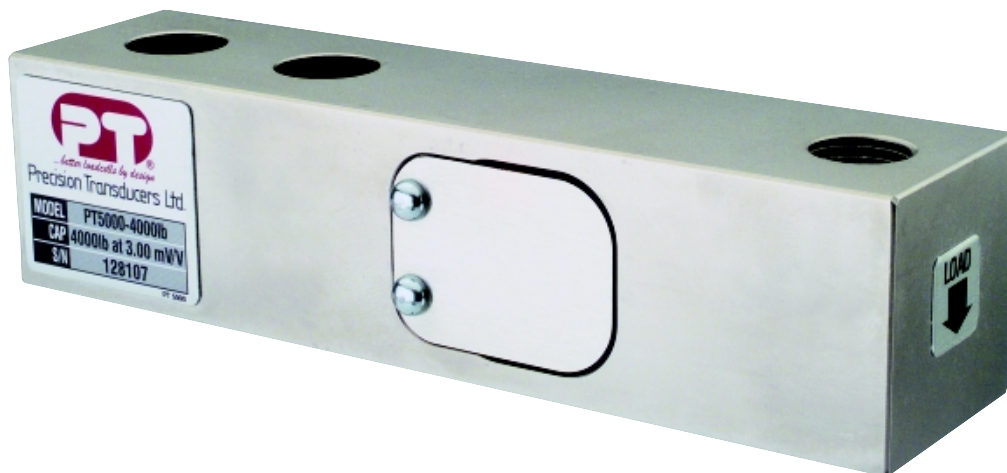
Model PT5000

RECTANGULAR SHEARBEAM

500~10,000 Pounds 250kg~5000kg

APPLICATIONS

- Floor scales
- Hopper, silo & bin weighing
- Tank weighing



FEATURES

- Trade certified for NTEP Class III:10,000 divisions
- Class III:9500 divisions 1,000 to 10,000 pounds
- Low profile with low sensitivity to axial loads
- 3 year warranty
- Sealed to IP67 standards
- ISO 9001 certified manufacturing facilities

<http://www.precisiontransducers.com>





Model PT5000

RECTANGULAR SHEARBEAM

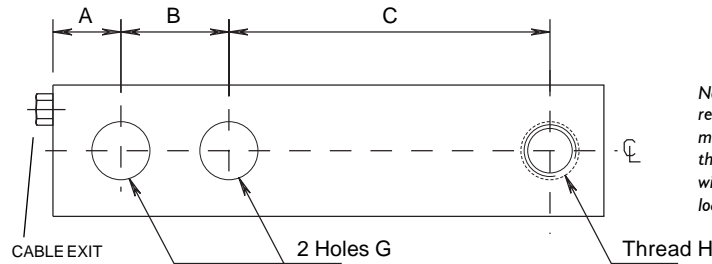
500~10,000 Pounds 250kg~5000kg

Ordering Information

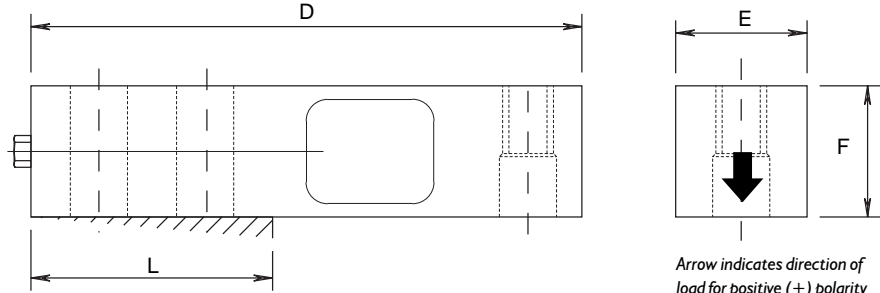
Capacity	Model
500lb	PT5000-500lb
1000lb	PT5000-1000lb
2500lb	PT5000-2500lb
4000lb	PT5000-4000lb
5000lb	PT5000-5000lb
10000lb	PT5000-10000lb
250kg	PT5000-250kg
500kg	PT5000-500kg
1000kg	PT5000-1000kg
2000kg	PT5000-2000kg
2500kg	PT5000-2500kg
5000kg	PT5000-5000kg

Cable Colour Code

Excitation +ve	Red
Excitation -ve	Black
Signal +ve	Green
Signal -ve	White



Note: Depending on the model to be replaced the thread in the load hole may be in the top or bottom half of the loadcell. Reversing the signal wires will accommodate reversal of loading direction.



A full range of accessories is available, please contact us for further details

Dimensions

Capacity	A	B	C	D	E	F	G	H	L	Deflection	Weight
500lbs	0.63	1.00	3.00	5.12	1.25	1.25	0.53	1/2-20 UNF-2B, Ø 0.53 x 0.50 Deep C'Bore	2.25	0.013	1.7
1K-4K	0.63	1.00	3.00	5.12	1.25	1.25	0.53	1/2-20 UNF-2B, Ø 0.53 x 0.62 Deep C'Bore	2.25	0.017 - 0.025	4.0
5K-10K	0.75	1.50	3.75	6.75	1.50	1.50	0.78	3/4-16 UNF-2B, Ø 0.78 x 0.75 Deep C'Bore	3.00	0.025 - 0.035	6.5
(250kg)	16.0	(25.4)	(76.2)	(130.0)	(32.0)	(32.0)	(13.5)	M12 x 1.75-6H, Ø 13.5 x 16.0 Deep C'Bore	(57.2)	(0.33)	(0.8)
(500kg-2t)	16.0	(25.4)	(76.2)	(130.0)	(32.0)	(32.0)	(13.5)	M12 x 1.75-6H, Ø 13.5 x 16.0 Deep C'Bore	(57.2)	(0.432-0.635)	(1.8)
(2.5t-5t)	19.0	(38.1)	(95.3)	(171.5)	(38.1)	(38.1)	(20.5)	M18 x 2.5-6H, Ø 20.5 x 19.0 Deep C'Bore	(76.2)	(0.635-0.889)	(2.9)

Dimensions are shown in inches (millimeters) and capacities are in pounds (kgs/metric tons)

Classes: NTEP III, NTEP IIII, Standard

Specifications

	NTEP III ⁽¹⁾	NTEP IIII ⁽¹⁾	All Classes
Max. No.Verification Intervals	9,500	10,000	-60° to 185° F / -50° to 85° C
	Multiple	Multiple	400-430 Ohms
	Standard		349-355 Ohms
Zero Balance	< 1.00 % FSO		Insulation Resistance > 5000 Mohms at 100 VDC
Non-Linearity	< 0.017 % FSO		Excitation Voltage (recommended) 5-15 Volts DC
Non-Repeatability	< 0.01 % FSO		Excitation Voltage (maximum) 18 Volts DC
Hysteresis	< 0.02 % FSO		Sideload Rejection Ratio 500:1
Combined Error	< 0.03 % FSO		Safe Sideload 100% of Rated Capacity
Creep Error	< 0.02 in 20 minutes % FSO		Safe Load 150% of Rated Capacity
Temperature Effect on Span °F	< 0.0008 % FSO		Ultimate Load 300% of Rated Capacity
Temperature Effect on Zero °F	< 0.0015 % FSO		Cable Type 4 conductor screened, 24 AWG
	All Classes		Cable Length 20 ft / 6 m standard or to order
Rated Output (±0.1%)	3.0 mV/V		Environmental Protection IP67 Standards
Compensated Temperature Range	14° to 104° F / -10° to 40° C		Material Alloy Tool Steel
Operating Temperature Range	0° to 150° F / -18° to 65° C		Finish Electroless Nickel

⁽¹⁾ Note: 1K-10K capacities only



Precision Transducers Ltd.

Sales & Product Information

P.O. Box 7205, Baulkham Hills, BC, NSW 2153, Australia

International	Fax +61 2 9680 7014	Phone +61 2 9680 7966
Australia	Fax 02 9680 7014	Phone 1800 777 866
New Zealand	Fax 0800 333 321	Phone 0800 543 210
Email	sales@precisiontransducers.com	

<http://www.precisiontransducers.com>



Due to Precision Transducer's policy of continuous development, these specifications are subject to change without notice.