



Precision Transducers Ltd.



Economy Cells Models ASB/AST

LOW COST SHEARBEAM & S-TYPE LOAD CELLS

100, 125, 250, 500, 1000kg

ASB SHEARBEAM



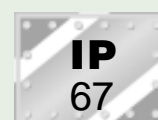
AST S-TYPE



FEATURES

- Marine grade anodised
- Robust construction
- Full range of mounting accessories
- Most competitively priced
- Wide capacity range from 100kg to 1000kg for the AST
125kg to 1000kg for the ASB
- Simple installation
- Suitable for most installations
- Ideal for agricultural use
- 3 year warranty
- Sealed to IP67 standards
- ISO 9001 certified manufacturing facilities

<http://www.precisiontransducers.com>





Economy Cells Models ASB/AST

LOW COST SHEARBEAM & S-TYPE LOAD CELLS

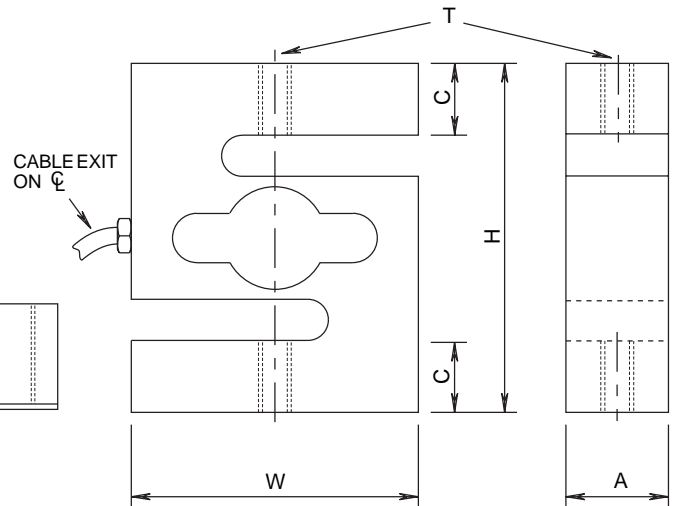
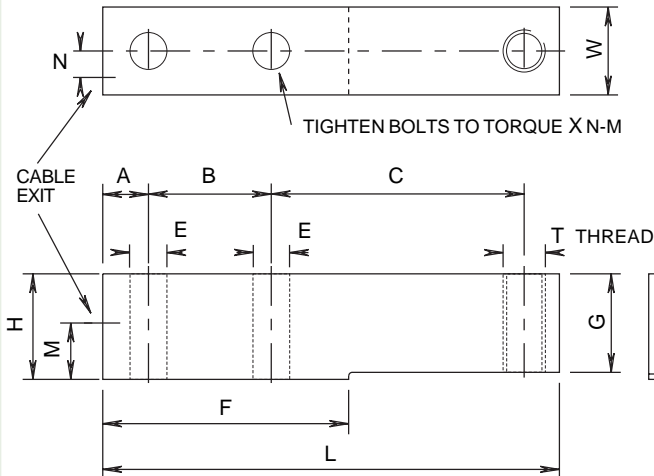
100, 125, 250, 500, 1000kg

Ordering Information

Capacity	Model	Capacity	Model
125kg	ASB-125	100kg	AST-100
250kg	ASB-250	250kg	AST-250
500kg	ASB-500	500kg	AST-500
1000kg	ASB-1000	1000kg	AST-1000

Cable Colour Code

Excitation +ve	Red
Excitation -ve	Black
Signal +ve	Green
Signal -ve	White



A full range of accessories is available, please contact us for further details

ASB Load Cell Dimensions

Capacity	A	B	C	E	F	G	H	L	M	N	T	W
125kg	10	30	52	∅ 6.5	55	20	25	100	12.5	5.2	M8 x 1.25	22
250kg	13	35	72	∅ 10.3	70	23	25	130	13.5	7.5	M12x1.75	25
500kg	13	35	72	∅ 10.3	70	28	30	130	16	7.5	M12x1.75	25
1000kg	13	35	72	∅ 10.3	70	30	31	130	16	7.5	M12x1.75	25

AST Load Cell Dimensions

Capacity	A	C	H	T	W
100kg	19	12.5	70	M8 x 1.25P	64
250kg	19	12.5	70	M8 x 1.25P	64
500kg	25	17.5	85	M12x1.75P	70
1000kg	25	20.0	96	M12x1.75P	75

Dimensions are shown in millimeters and capacities are in kgs/metric tons

Specifications

	ASB	AST	Both Models
Nominal capacity	125kg to 1t	100kg to 1t	>1000 M ohms
Nominal output at capacity	2.0 mV/V	±0.1%*	-10° C to 40° C
Linearity error	0.025%	0.025%	352 ohms nominal
Repeatability	0.02%	0.020%	410 ohms nominal
Zero return, creep (30 mins)	0.035%	0.035%	Service Load 100% of capacity
Combined error	0.05%	0.05%	Safe Load 125% of capacity
Accuracy class	0.07%	0.07%	Mechanical Failure >300% of capacity
Temperature Effect on Span/10° C	0.015%	0.015%	Recommended Excitation 5V to 12V ac/dc
Temperature Effect on Zero/10° C	0.025%	0.02%	Maximum Excitation 15V dc
Zero Balance	3%	3%	Cable Type 4 conductor screened
			Cable Length 3 Metres
			Environmental Protection IP67 Standard

Note: All specifications are a maximum, as a % (±) of full load, unless otherwise stated.

* 0.5% for ASB 125kg, AST 100kg



Precision Transducers Ltd.

Sales & Product Information

P.O. Box 7205, Baulkham Hills, BC, NSW 2153, Australia

International	Fax +61 2 9680 7014	Phone +61 2 9680 7966
Australia	Fax 02 9680 7014	Phone 1800 777 866
New Zealand	Fax 0800 333 321	Phone 0800 543 210
Email	sales@precisiontransducers.com	

<http://www.precisiontransducers.com>



Due to Precision Transducer's policy of continuous development, these specifications are subject to change without notice.