

Microolution  
MLTC

# Simplify complex tube cutting with Laser



Microlution MLTC

Design for extreme accuracy and uncompromising quality

The MLTC platform from GF Machining Solutions brings the precision and flexibility of laser machining together with the ability to create even the most complex designs in a single set-up, all with unmatched part quality. Achieve success in the medical device industry and other applications, thanks to the ultrafast MLTC Laser tube-cutting platform. Quickly and accurately machine complex features in metal and polymer tubes with high precision.



Technical specifications

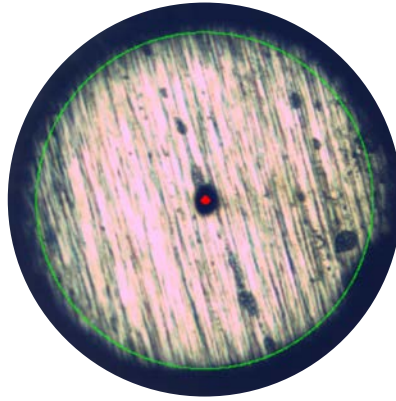
MLTC

Machine dimension*	mm (in)	1600 x 2000 x 2000 (63.0 x 78.7 x 78.7)
Machine weight (machine only)	kg (lbs)	2300 (5000)
Axis travel X/Y/Z	mm (in)	280 x 20 x 24 (11.0 x 0.8 x 0.9)
Spindle speed	rpm	1000
Laser source	W	40

\* Length x depth x height



**Special-designed spindle for very small delicate tube handling**



**Beam coaxial and on-end cameras to reduce scrap material and perform secondary operations**



**Bar Feeder options for high volume production**

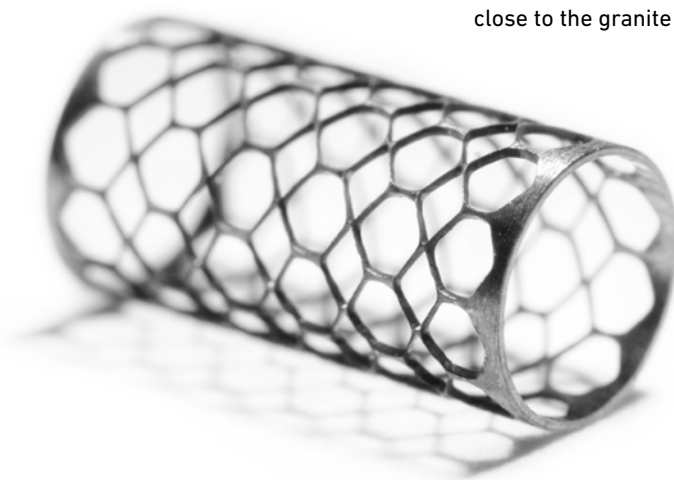


#### **Femtosecond Laser process**

Minimize material lost during the machining process, achieve superior, burr-free surface finishing, and get dimensional control—all thanks to femtosecond Laser pulses allowing clean material ablation.

#### **Maintain consistently stable quality**

Get the enhanced productivity that comes from achieving rapid accelerations while maintaining high accuracy. This is possible due to Microlution's core design principles: the granite base delivers stability due to its low thermal expansion coefficient and high mass; the short structural loops keep the work-piece (which is under high acceleration) close to the granite base.



#### **One process to improve in quality, efficiency and flexibility**

Experience the perfect combination of precision and flexibility in one Laser solution and machine even the most complex designs in a single setup—all with unmatched part quality and an optimized workflow.

#### **Reduce scrapped parts**

Easily handle small, thin-walled parts and avoid the risk of scrapped parts, thanks to our smart clamping tool. This innovative concept manages and clamps your parts without damage.



# At a glance

We enable our customers to run their businesses efficiently and effectively by offering innovative Milling, EDM, Laser, Additive Manufacturing, Spindle, Tooling and Automation solutions. A comprehensive package of services completes our proposition.

[www.gfms.com](http://www.gfms.com)

